

# ROSSLARE SECURITY PRODUCTS

## ACCESS CONTROL

### Networked Controllers

# AC-115

## Compact Networked Controller

- Suitable for small-scale installations where more than one door is needed
- Networked up to 8 controllers
- Up to 2,400 users
- Up to 2000 events can be logged
- 2 readers supporting Wiegand 26-Bit
- Supports Time Zones, Holidays, Access Groups
- Built-in sounder for bell, chime, and siren
- PC application for full configuration, reports, and live monitoring



# AC-215

## Networked Access Controller

- Suitable for medium- to large-scale installations where advanced features are needed
- Networked up to 1023 panels
- Up to 5,000 users
- Up to 5000 events can be logged
- 2 readers supporting various formats
- Car parking management
- Global antipassback
- 4 inputs and 4 outputs with flexible configuration and control
- AxTraxNG™ PC application for full configuration, reports, and live monitoring



# AC-215IP

## Advanced Networked Access Controller

- AC-215 features
- Up to 30,000 users
- Up to 20,000 events can be logged
- Networking abilities including TCP/IP and on-site/off-site WAN and LAN communication for remote access management
- Seamlessly upgraded into an existing network



# AC-225/225IP

## Advanced 2-Reader Networked Access Controller

- Suitable for medium- to large-scale installations where advanced features are needed
- Networked up to 1023 panels (up to 4092 doors)
- Up to 30,000 users
- Up to 20,000 events can be logged
- Up to 4 readers supporting various formats
- Car parking management
- Global antipassback
- AxTraxNG™ PC application for full configuration, reports, and live monitoring
- Available AC-225IP with on-board IP connection



# AC-425/425IP

## Advanced Networked Access Controller

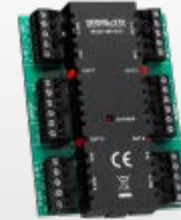
- Suitable for medium- to large-scale installations where advanced features are needed
- Networked up to 1023 panels
- Up to 30,000 users
- Up to 20,000 events can be logged
- Up to 8 readers supporting various formats
- Car parking management
- Global antipassback
- AxTraxNG™ PC application for full configuration, reports, and live monitoring
- Available AC-425IP with on-board IP connection



# MD-D02, MD-D04, MD-IO84

## System Expansions

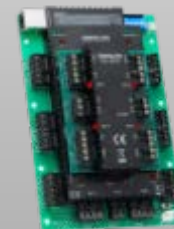
- MD-D02 provides additional 2 reader or keypad inputs; 4 relay outputs and 4 supervised inputs to the access control panel
- MD-D04 provides additional 4 reader or keypad inputs; 4 relay outputs and 4 supervised inputs to the access control panel
- MD-IO84 provides additional 4 relay outputs and 8 supervised inputs to the access control panel



MD-D02



MD-D04



MD-IO84

# AC-825IP

## Advanced Scalable Networked Access Platform

- AC-825IP is a tailor made solution
- **Modular** solution for medium to high scale security systems both for commercial and institutional needs
- AC-825IP is an advanced 4-door networked access controller **expandable** to an 8-door onboard configuration (10-door configuration with 2 OSDP readers)
- Comes with one onboard expansion slot and can be further expanded by connecting up to 12 expansion boards
- Driven by AxTraxNG™, Rosslare's powerful, flexible and easy-to-use software
- CE and FCC compliant

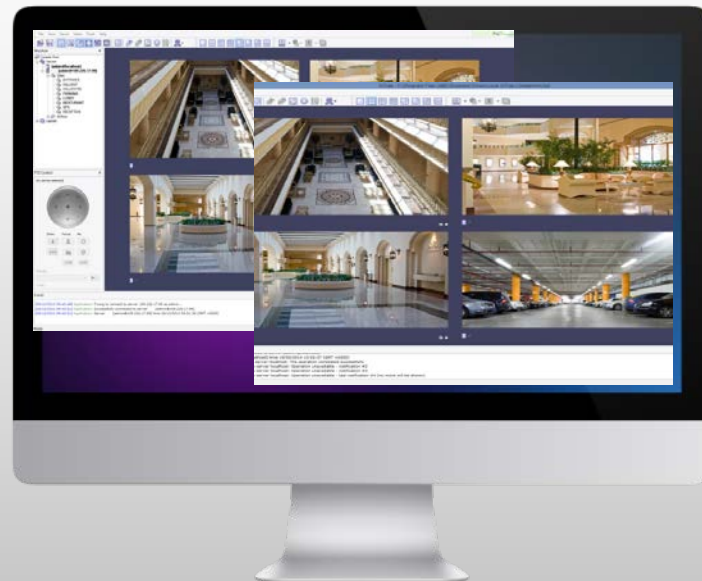




# ViTrax™

## Advanced Digital Video Recording and Remote Management Software

- A multi-server/multi-client solution providing a complete set of features and IP cameras management
- No geographical boundaries
- User-friendly and intuitive wizards make ViTrax easy to use and configure
- Range of license permissions for different types of installations

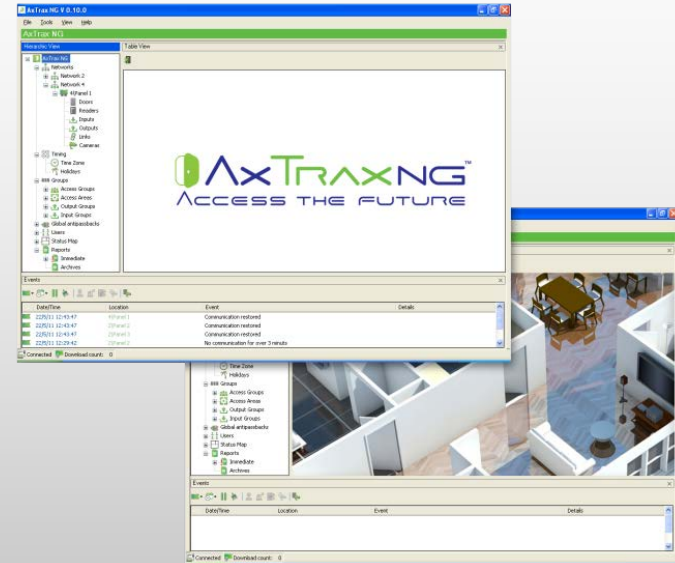


 ViTrax™

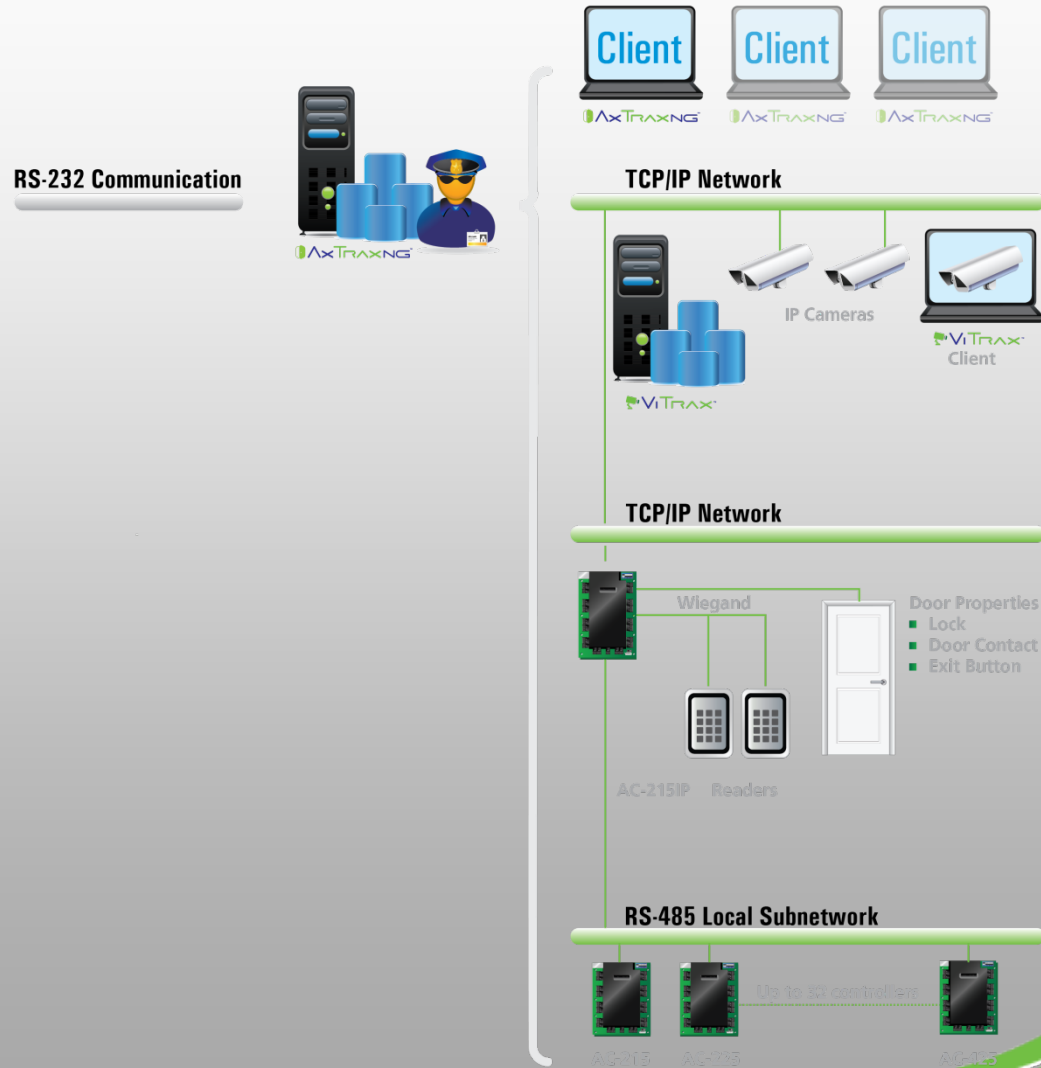
# AxTraxNG™ Software

## Access Control Management Software

- Based on SQL database
- Supports AC-215, AC-215IP, AC-225/225IP, AC-425/425IP, and AC-825IP access control panels
- Allows setup of codes, activities, time zones, and modes
- Users rights management
- Interactive reports design and production
- Supports up to 1023 panels
- Third-party solutions integration
- ViTrax™ video management integration



# Networked Access Control System Architecture



# Capacity Comparison

Spec	AC-215	AC-215IP	AC-225/225IP	AC-425/425IP	AC-825IP
Max. Number of Users	5,000	30,000	30,000	30,000	60,000
Access Groups	Unlimited	Unlimited	Unlimited	Unlimited	Unlimited
Event Log Buffer	50,00 Events	20,000 Events	20,000 Events	20,000 Events	500,000 Events
Max. Readers	2	2	2 (onboard) + 2 (MD-02)	4 (onboard) + 4 (MD-04)	4 (using MD-02)
Max. I/O Capacity  Inputs – 4-state Supervised  Outputs – 5A, Heavy Duty	4 Inputs, 4 Outputs	4 Inputs, 4 Outputs	Inputs: 4 (onboard) + 8 (MD-IO84) or 4 (onboard) + 4 (MD-D02)  Outputs: 4 (onboard) + 4 (MD-IO84) or 4 (onboard) + 4 (MD-D02)	4 Inputs, 4 Outputs  Using expansion module: MD-IO84 – 8 inputs, 4 outputs MD-D04 – 4 inputs, 4 outputs	4 Inputs, 4 Outputs Using expansion module: MD-IO84 – 8 inputs, 4 outputs MD-D02 – 4 inputs, 4 outputs
Communication Ports	RS-232, RS-485	RS-232, RS-485 or TCP/IP	RS-232, RS-485 (AC-225IP – TCP/IP on board)	RS-232, RS-485 or TCP/IP with AC-425IP	Onboard TCP/IP OSDP/RSDP bus, USB expansion bus for R/S/D/P-805 boards
Power Supply	12 V, 0.5 A + 1.5 A including charger	12 V, 0.5 A + 1.5 A including charger	12 V, 2A + 3 A including charger	12 V, 2A + 3 A including charger	12 VAC, 4 A

# Thank you!